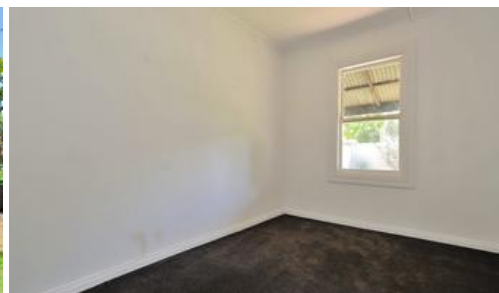


Sold

15 James St, Guildford



## HISTORIC GUILDFORD

Golden opportunity to secure a traditional circa 1920's Guildford workers cottage

High ceilings, timber floors throughout, double hung window, French doors all combine to retain that air of nostalgia

The kitchen has a large stone top island bench with plenty of storage, Bathroom has walk in shower, floor to ceiling tiling.

Off the kitchen we have cafe style bi-fold doors that open out onto a timber deck that overlooks the back yard

This is a must see property, you will be captivated by its charm.

Close to schools, transport, shops. Call Lyn Callaghan 0411 471 432 today to arrange your private viewing

Block size 450sqm

All details are presented on the vendors advice. Prospective purchasers should take the necessary actions on their own behalf to satisfy themselves of the details of conditions, contents, fixtures and improvements in regards to this property.

The above information provided has been furnished to us by the vendor/s. We have not verified whether or not that information is accurate and do not have any belief in one way or the other in its accuracy. We do not accept any responsibility to any person for its accuracy and do no more than pass it on. All interested parties should make and rely upon their own inquiries in order to determine whether or not this information is in fact accurate.

2 1 1

Price  
Property Type  
Property ID

SOLD  
residential  
468

### Agent Details

Lyn Callaghan - 0411471432

### Office Details

Bassendean  
73 Walter Road East, WA 6054  
Bassendean WA 6054 Australia  
08 9279 4271

